

## Centrifugal fans



CE



## DATA SHEET

**MODEL : D-ARD-BC-3.0-1728/5000-550**



DESCRIPTION	UNIT	VALUE
Flow Rate	(CFM / LPS)	5000 / 2359
ESP	(Pa)	550
Working Temp.	(Deg.Cel)	50
Motor Rating	(HP / kW)	4.0 / 3.0
Pole		4 P
Volt/Phase		400V / 3 Ph
Frequency	(Hz)	60
Operating Speed	(Rpm)	1728
Motor Make, Origin		PYTHON
Blade		Backward Curved
BHP (NTP)	(HP / kW)	3.21 / 2.40
dB(A)	(dB)	81.36
Drive		Direct Driven
Protection		IP 55
Insulation	Class	F
Efficiency		IE3
Vibration Amplitude (Normal)	(mil)	1.66

### **Material Specs:**

Casing & Blades (Thk)	3 mm.
Casing (MOC)	Mild Steel
Impellor (MOC)	Mild Steel
Coating	Powder Coated (RAL 7035)
Total Weight (Kgs)	138

### **Included Accessories:**

Drain plug, Inspection door, Motor Cover.

### **Optional Accessories:**

VFD, Volume control damper, Sound attenuator, Bird mesh, Motorized damper, Ex. Motors

### **Warranty:**

*Dumech warrants this equipment from material defect and workmanship for a period of one year from the delivery date or shipment date. Any parts proven to be defective in this span of time will be replaced at our cost.*

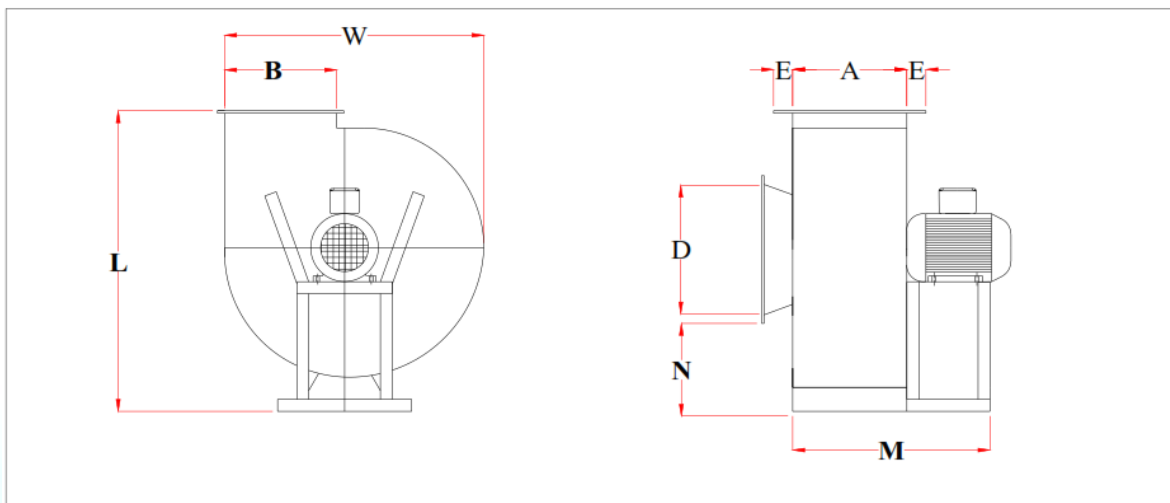
*Motors equipped with our units are warranted by the motor manufacturer for a period of one year. Replacement or Re-conditioning of motors shall be done based on availability of stock at our cost (with in the warranty period).*

### **Application:**

1. Ventilation System.
2. Fume extraction system.

### **Discharge Positions:**



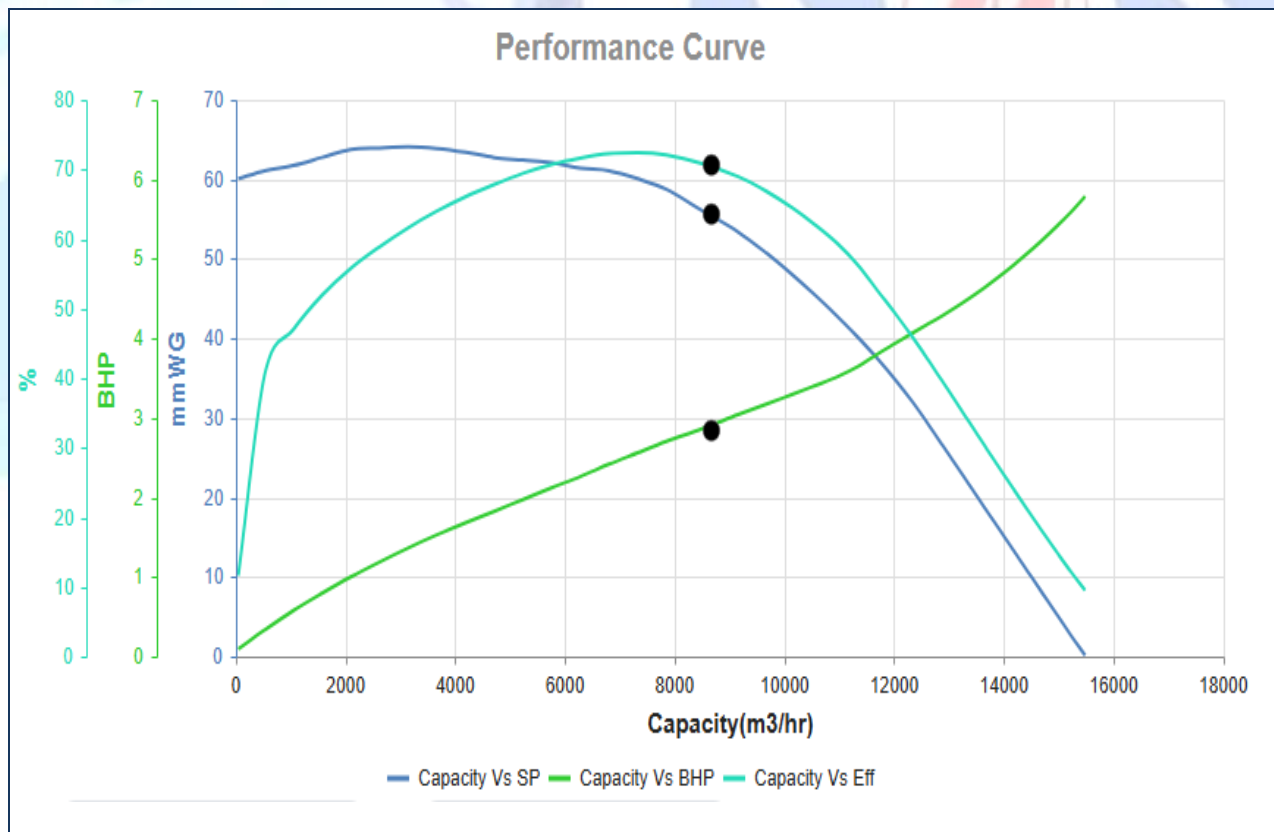


\*All Drawings are subjected to change without prior notice.

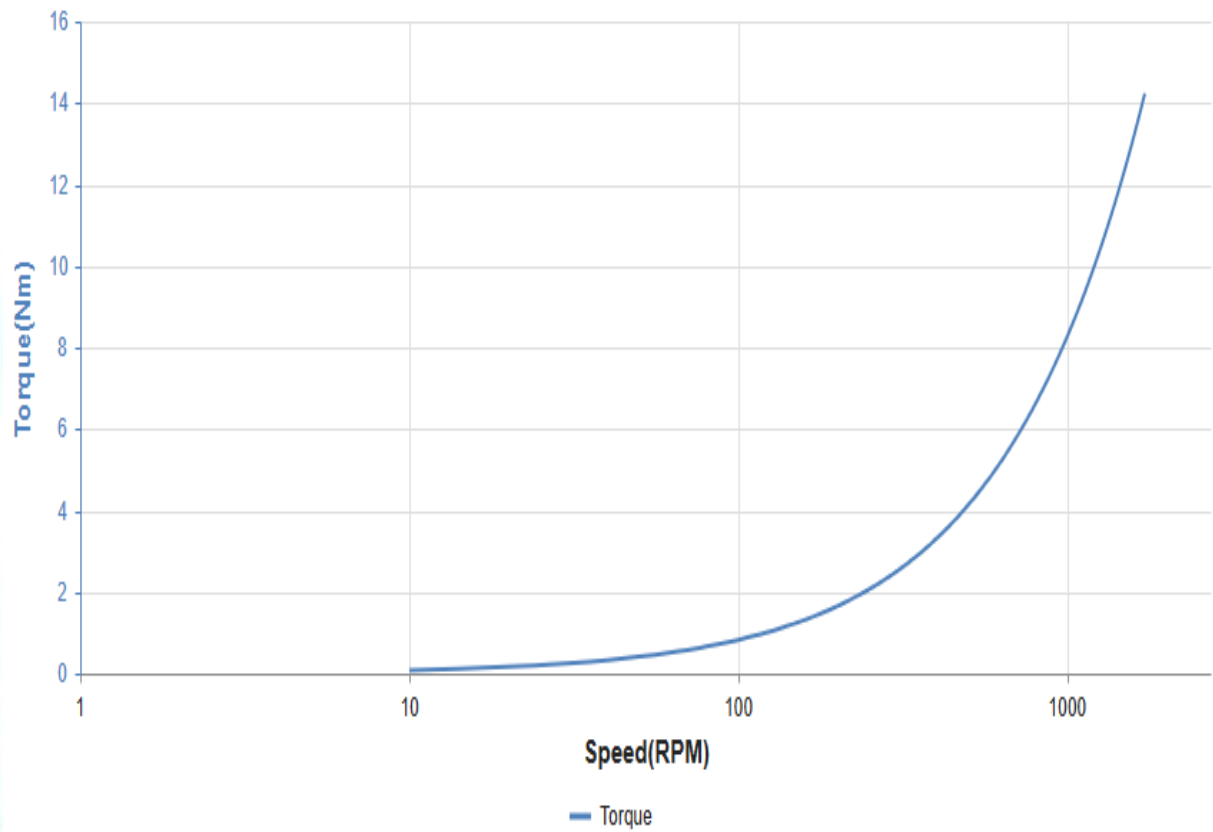
### Overall fan dimensions:

A	E	B	W	L	D	N	M
310	50	520	850	894	460	284	636

### Performance curve:



## Speed Torque Curve



Excellent Warranty Terms.  
Ask Us about it



Ready? Talk to our Sales Rep  
Call: +966 53 804 0908



*We Drive air in your way!*



**DUMECH**  
ENGINEERING WORKS (L.L.C.)

**HEAD OFFICE**

Ware House No.5, Industrial Area, Al Quoze 4  
Tel : 04 3474929 , Fax : 04 3474917 , P.O. Box:49771, Dubai - UAE  
E-mail:dumech@eim.ae, Web :www.dumech.com



**DUMECH**  
VENTILATION EQUIPMENT MANUFACTURING CO LLC

**BRANCH**

Ware House No.3, Industrial Area, Al Quoze 3  
Tel : 04 3474929 , Fax : 04 3474917



**DUMECH**  
LIMITED COMPANY

**BRANCH**

Al Sulay Industyrial Area, Riyadh, Saudi Arabia



**EUROPEAN**



**COMPLIANCE**