

Performance	
Quantity	1
Volume (CFM)	1,500
Total External SP (in. wg)	3
Operating Power (hp)	1.09
Required Power (hp)	1.09
Fan RPM	2506
Max Fan RPM	3,151
Oper. Frequency (Hz)	60
Elevation (ft)	2,034
Start-up Temp.(F)	70
Operating Temp.(F)	70

Fan Configuration	
Size	12
Wheel Type	BI
Arrangement	10
Drive Type	Belt
Class	I
Rotation	CW
Discharge Position	TH
Construction Type	PermaLock
Spark Resistance	None
Scroll Material	Steel
Wheel Material	Steel
Inlet Cone Material	Steel
Pedestal Material	Steel

Equipment Weights	
Fan (LMD)(lb)	118
Motor/Drive (lb)	61
Accessories (lb)	0
Fan Total (lb)	179

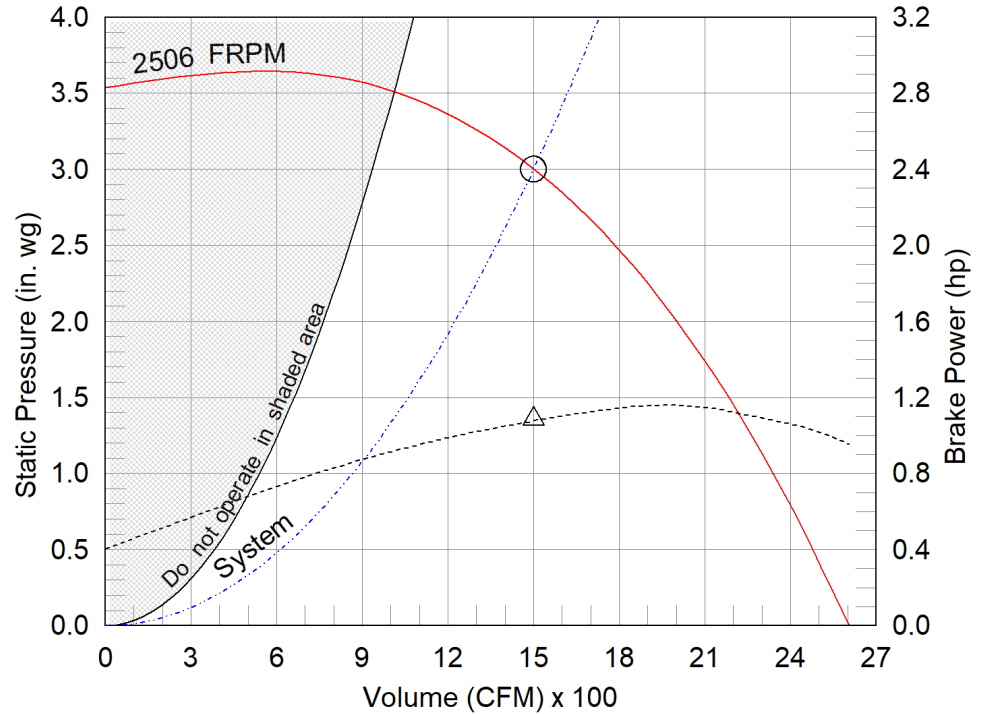
Misc Fan Data	
Fan Energy Index (FEI)	1.10
Outlet Velocity (ft/min)	1,737
Static Efficiency (%)	70
Tip Speed (ft/min)	8,038
Shaft Bearing Type	Standard
Bearing Life Calculation	Operating Point
L10 - Bearing Life (hrs.)	1,000,000

Motor and Drives	
Motor	Included
Size (hp)	1 1/2
RPM	1725
Enclosure	ODP
V/C/P	230/60/1
Frame Size	56
Max Frame Size	145
Location	Centered
Pulley Type	Constant
Drive Loss (%)	6.0
Drives	Standard
Drive Service Factor	1.5
MCA* (Amps)	12.5
MOP* (Amps)	15
SCCR* (Kiloamps)	5

## Model: USF-12

### Universal Single Width Fan

#### Operating Performance



- △ Operating Bhp point
- Operating point at Total External SP
- Fan curve
- - - System curve
- - - Brake horsepower curve

Nameplate Model: USF-12-3-B6-00-02-02

#### Sound Power by Octave Band

Sound Data	62.5	125	250	500	1000	2000	4000	8000	LwA	dBA	Sones
Inlet	80	77	80	80	76	72	69	64	81	70	17.6
Outlet	96	87	81	81	75	74	69	65	83	71	23

\*Values are estimated and subject to change. Actual values provided on fan at time of manufacture.

LwA - A weighted sound power level, based on ANSI S1.4

dBA - A weighted sound pressure level, based on 11.5 dB attenuation per octave band at 5 ft- dBA levels are not licensed by AMCA International

Sones - calculated using AMCA 301 at 5 ft



## Model: USF-12

### Universal Single Width Fan

#### Standard Construction Features:

HOUSING: Class II and under feature Perma-Lock construction on sizes 4 - 49 and continuously welded on sizes 54 - 73 and all class III fans - Unit support angles with mounting holes - Adjustable motor plate - Corrosion resistant fasteners - Inlet collars - Outlet flange standard on sizes 27 - 73 and all class III fans - Untreated steel parts are processed through a multi-stage cleaning and pre-treatment and then finished with a high-performance powder coating. Sizes 24 and less are rotatable in 45 deg. increments. Sizes 27 to 40 are rotatable in 90 deg. increments. Sizes greater than 40 and all class III are not rotatable.

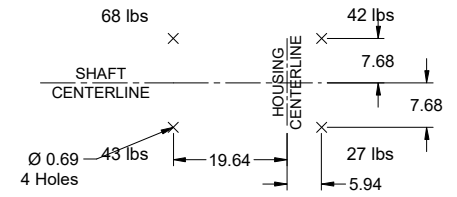
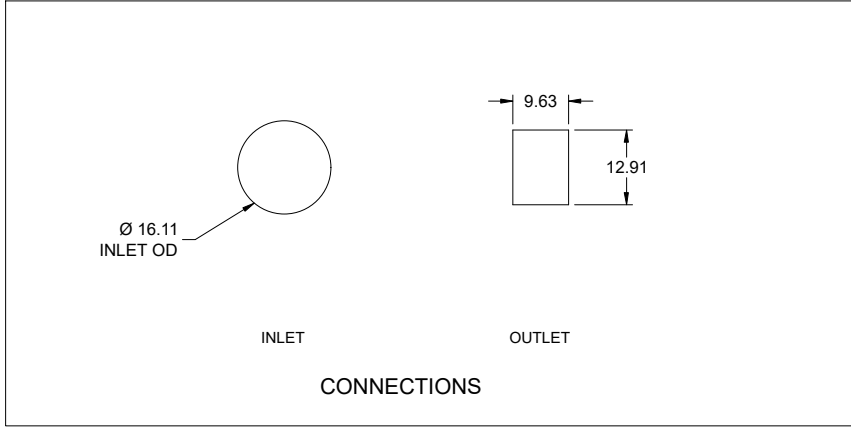
BEARINGS, SHAFT, AND WHEEL: Air handling quality, self-aligning, ball bearing in pillow block housing - Polished, solid steel shafts with rust inhibitor - Centrifugal wheel

#### Selected Options & Accessories:

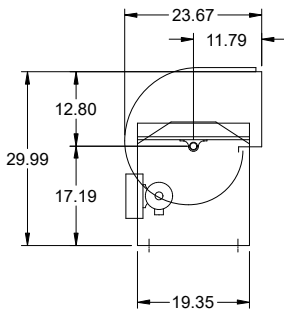
Motor with Capacitor Start  
Switch - NEMA-3R, Toggle, For Indoor or Outdoor Use, Mounted & Wired  
Motor with Class B or Greater Insulation  
Standard Drives  
Finish - Coated  
Coating - Permatecor, Concrete Gray-RAL 7023, Fan and Attached Accessories  
Rotation - CW  
Bearings - L10 Standard Life, 1000k hours at OperatingPoint  
Discharge Position - TH  
UL/cUL-705 - Power Ventilators  
Polished Steel Shaft  
Extended Lube Lines - Nylon  
Inlet Connection, Slip Fit  
Outlet Connection, Slip Fit  
Weatherhood - Steel Construction  
Fasteners - Standard  
Saudi Arabia Standards Organization (SASO) Compliant  
Unit Warranty: 1 Yr (Standard)

Model: USF-12

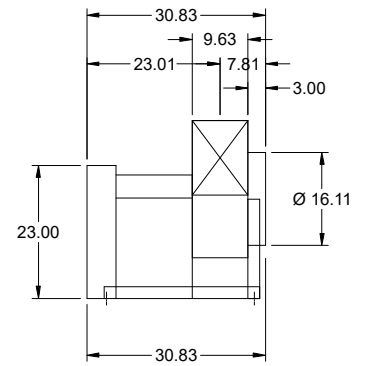
Universal Single Width Fan



FOOTPRINT VIEW



SIDE VIEW



END VIEW

Notes: All dimensions shown are in units of in.

## AMCA



AMCA Licensed for Sound and Air Performance and FEI ratings. Power rating (BHP/kW) includes transmission losses.

Greenheck Fan Corporation certifies that the model shown herein is licensed to bear the AMCA Seal. The ratings shown are based on tests and procedures performed in accordance with AMCA Publication 211 and AMCA Publication 311 and comply with the requirements of the AMCA Certified Ratings Program. The AMCA certified ratings seal applies to sound and air performance and FEI ratings only. Performance certified is for installation type B: Free inlet, Ducted outlet. Performance ratings do not include the effects of appurtenances (accessories). Power ratings (BHP/kW) include transmission losses. The sound power level ratings shown are in decibels, referred to 10-12 watts calculated per AMCA Standard 301. The A-weighted sound ratings shown have been calculated per AMCA International Standard 301. Values shown are for inlet Lwi, LwiA, and outlet Lwo, LwoA sound power levels for installation type B: Free inlet, Ducted outlet. Outlet ratings include the effects of duct end correction. dBA levels are not licensed by AMCA International. The AMCA Certified Ratings Seal for Sound applies to inlet LwiA and outlet LwoA ratings only.