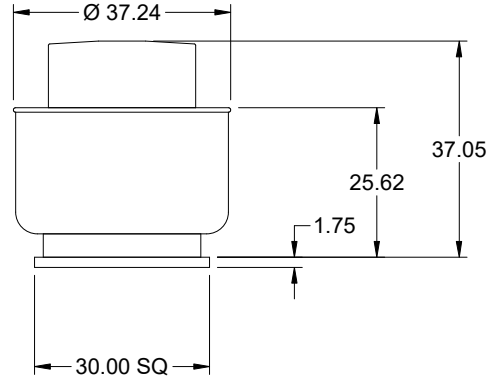


Model: CUBE-200-20

Belt Drive Upblast Centrifugal Roof Exhaust Fan



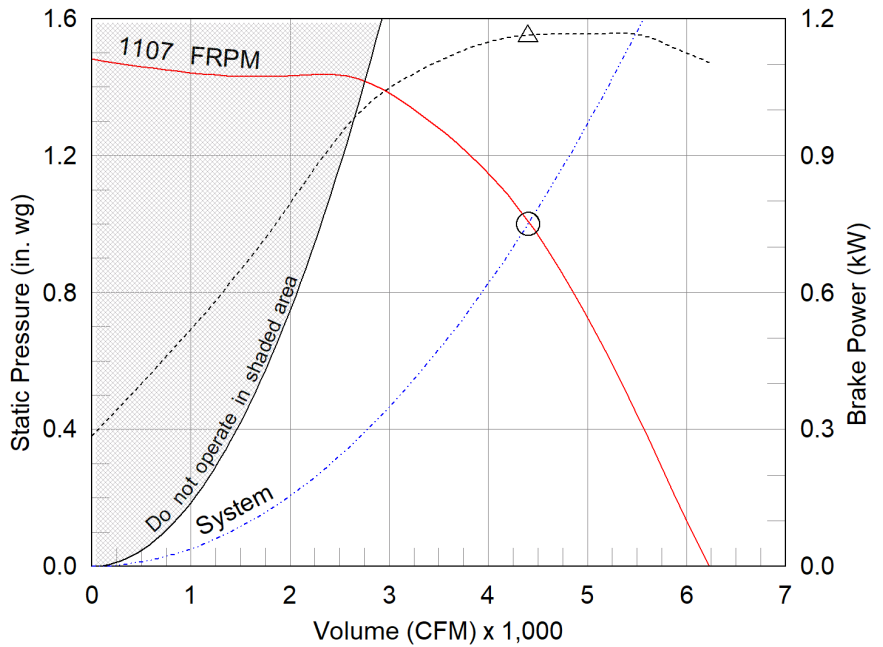
Dimensional	
Quantity	1
Weight w/o Acc's (kg)	68
Weight w/ Acc's (kg)	69
Max T Motor Frame Size	184
Standard Curb Cap Size (in.)	30 x 30
Roof Opening (in.)	26.5 x 26.5

Performance	
Requested Volume (CFM)	4,400
Actual Volume (CFM)	4,400
Total External SP (in. wg)	1
Fan RPM	1107
Operating Power (kW)	1.16
Elevation (m)	620
Airstream Temp.(C)	21
Air Density (kg/m3)	1.115
Drive Loss (%)	5.2
Tip Speed (m/sec)	31.471
Static Eff. (%)	47

Misc Fan Data	
Fan Energy Index (FEI)	0.91
Outlet Velocity (m/sec)	7.655

Motor	
Motor Included	Yes
Size (hp)	2
Voltage/Cycle/Phase	230/60/1
Enclosure	ODP
Motor RPM	1725
Efficiency Rating	Standard
Windings	1
NEC FLA* (Amps)	12
Min. Circuit Ampacity (MCA)	15
Max. Overcurrent Protection (MOP)	30
Short Circuit Current Rtg (SCCR)	5 kA

OVERALL HEIGHT MAY BE GREATER DEPENDING ON MOTOR, ADAPTER, AND/OR HINGE BASE.



- △ Operating BkW point
- Operating point at Total External SP
- Fan curve
- - - System curve
- Brake kilowatts curve

Notes:

All dimensions shown are in units of in.
*NEC FLA, MCA and MOP are for reference only – based on tables 430.248 or 430.25 of National Electric Code 2020. Actual motor FLA may vary, for sizing thermal overload, consult factory.
MCA and MOP values shown only account for the motor, not accessories (damper actuator, field supplied VFD, etc).
LwA - A weighted sound power level, based on ANSI S1.4 dBA - A weighted sound pressure level, based on 11.5 dB attenuation per Octave band at 1.52 m - dBA levels are not licensed by AMCA International
Sones - calculated using ANSI/AMCA 301 at 1.52 m

Sound Power by Octave Band

Sound Data	62.5	125	250	500	1000	2000	4000	8000	LwA	dBA	Sones
Inlet	71	81	89	79	70	71	67	62	83	71	19.7



Model: CUBE-200-20

Belt Drive Upblast Centrifugal Roof Exhaust Fan

Standard Construction Features:

- Aluminum housing - Backward inclined aluminum wheel - Curb cap with prepunched mounting holes - Motor and drives isolated on shock mounts - Drain trough - Ball bearing motors - Adjustable motor pulley - Adjustable motor plate - Fan shaft mounted in ball bearing pillow blocks - Bearings meet or exceed temperature rating of fan - Static resistant belts - Corrosion resistant fasteners - Internal lifting lugs - Removable power pack - Tool-less hood entry

Selected Options & Accessories:

Saudi Arabia Standards Organization (SASO)
Standard Curb Cap Size - 30 Square
UL/cUL 705 Listed - "Power Ventilators"
Switch, NEMA-1, Toggle,
Junction Box Mounted & Wired in weather-protected motor compartment
Bearings with Grease Fittings, L10 life of 100,000 hrs (L50 avg. life 500,000 hrs)
Conduit Chase Qty 1
Unit Warranty: 1 Yr (Standard)
Not available to ship to California

AMCA



AMCA Licensed for Sound and Air Performance and FEI ratings. Power rating (BHP/kW) includes transmission losses.

Greenheck Fan Corporation certifies that the model shown herein is licensed to bear the AMCA Seal. The ratings shown are based on tests and procedures performed in accordance with AMCA Publication 211 and AMCA Publication 311 and comply with the requirements of the AMCA Certified Ratings Program. The AMCA certified ratings seal applies to sound and air performance and FEI ratings only. Performance certified is for installation type A: Free inlet, Free outlet. Power rating (BHP/kW) includes transmission losses. Performance ratings include the effects of birdscreen. The sound ratings shown are loudness values in fan sones at 5 ft. (1.5 m) in a hemispherical free field calculated per ANSI/AMCA Standard 301. Values shown are for installation type A: free inlet hemispherical sone levels. dBA levels are not licensed by AMCA International. The AMCA Certified Ratings Seal applies to sone ratings only.